



HUNTER

DIGITAL LIGHT PROCESSING 3D PRINTER





PARAMETERS

Build Volume: 4.72" x 2.66" x 5.91" (120 x 67.5 x 150mm)
Pixel Size X, Y: 0.0025" (62.5µm)
Layer Resolution: 0.0005"/ 0.0010"/ 0.0020" (12.5 / 25 / 50µm)
Light Source: 405nm LED
File Input: STL
Machine Size: 14.17" x 12.20" x 22.24" (360 x 310 x 565mm)
Weight: 17.8kg (39.24lbs)
Power: 100-240V, 50-60Hz, 1A
Software: FlashPrint
Connectivity: USB Stick / USB Cable / WIFI



LIGHT ENGINE

Self-developed proprietary light engine with FHD 1080p resolution and 50,000 hours life span.

LIGHT INTENSITY CONTROL

The unique closed-loop feedback light intensity control system ensures sustained and stable LED intensity, enabling stronger stability and finer print details.



LINEAR MOTION GUIDE ACTUATOR

Industrial Z axis LM guide actuator module enables an accuracy of micron, achieving smoother printing surface.



FEP VAT FILM ♦



ALUMINIUM RESIN VAT FEP VAT FILM

LONG SERVICE LIFE EASY REPLACEMENT

Easily dismount resin vat for the change of material to ensure little material waste.

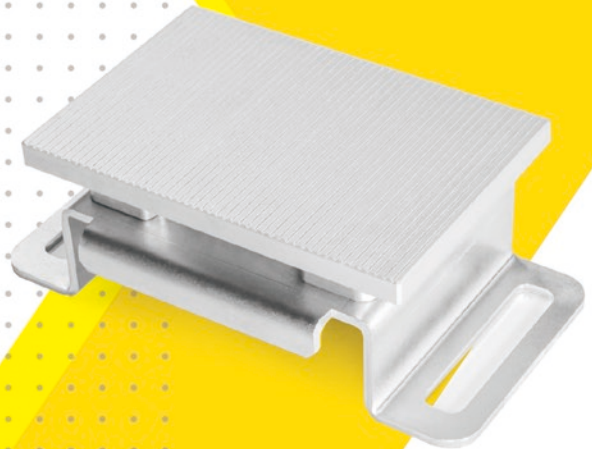
Durable aluminium resin vat requires no maintenance. The long service life FEP vat film can be easily replaced and thus low acquisition cost.

BUILD PLATE

DURABLE NO CALIBRATION QUICK REPLACEMENT

The build plate can be replaced quickly and there is no need for calibration.

That is faster printing speed and easier to do post treatment.





CONNECTIVITY

Multiple connectivities,
more convenience.



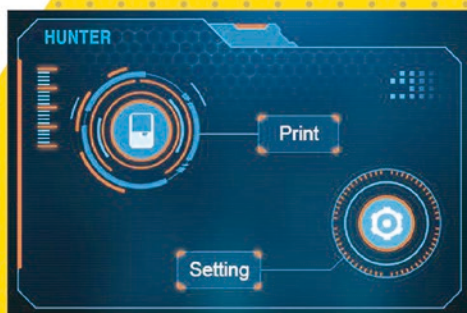
USB
STICK



USB

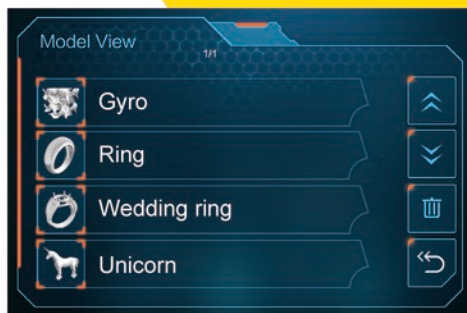


WIFI



TOUCH SCREEN

Simple and intuitive user interface that is
super easy to use.

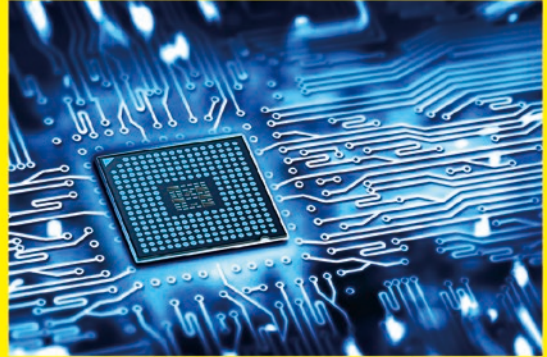


ADVANCED MAINBOARD DESIGN

Advanced architecture mainboard and self-developed proprietary light engine work together perfectly.

Dual-core 800MHZ ARM processor ensures high-performance and better user experience.

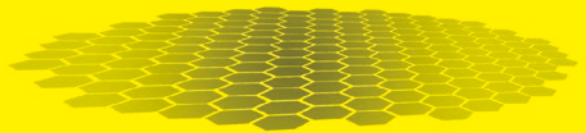
The mainboard is designed and made in 10-layer high precision board, safeguarding EMC, the integrity and the stability of the projection signal.



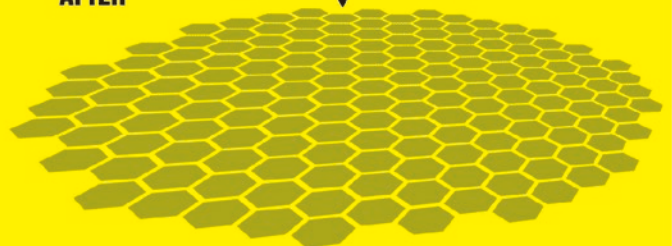
LIGHT INTENSITY UNIFORMITY

Light engine with calibrated luminous intensity uniformity ensures evenly distributed luminous intensity for the projection.

BEFORE

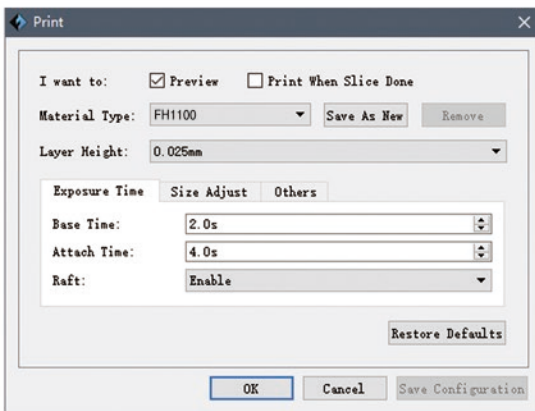
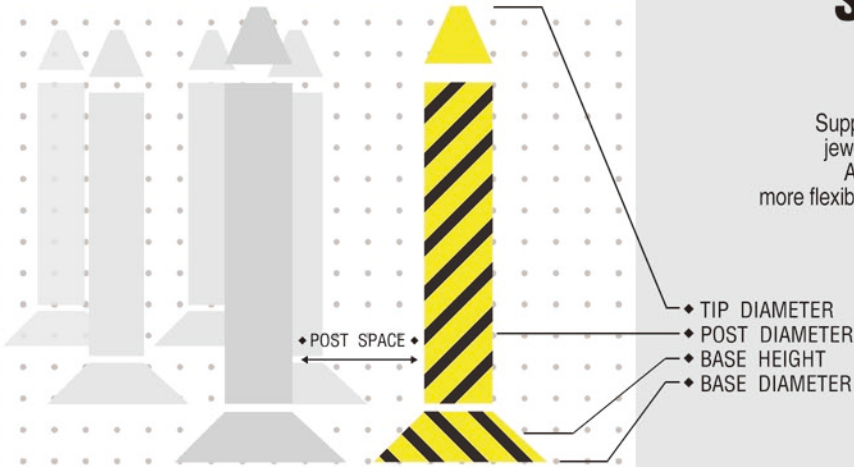


AFTER



JEWELRY SUPPORT MODE

Support mode catered for jewelry and accessories. Advanced settings for more flexible support structures.

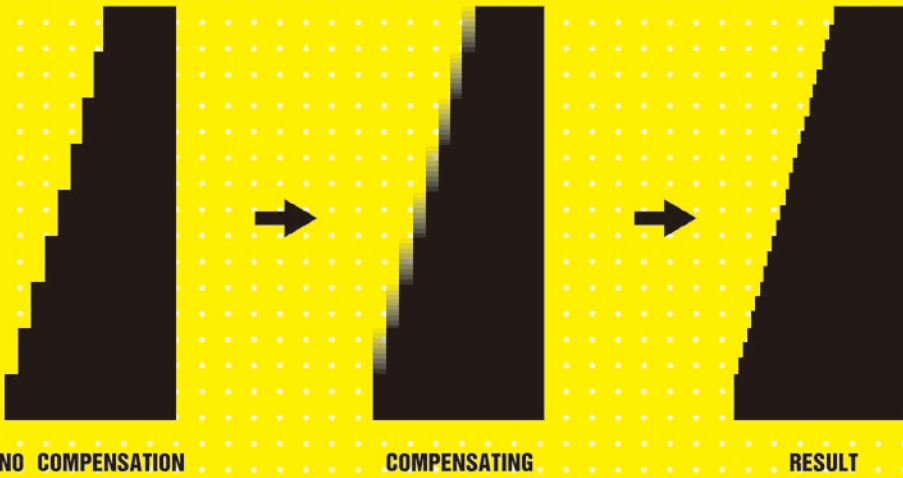


BUILT-IN RESIN SETTINGS

Default printing parameters for different types of resin are built in the slicing software. Choose one of the defaults to start printing right away or modify parameters for advanced settings.

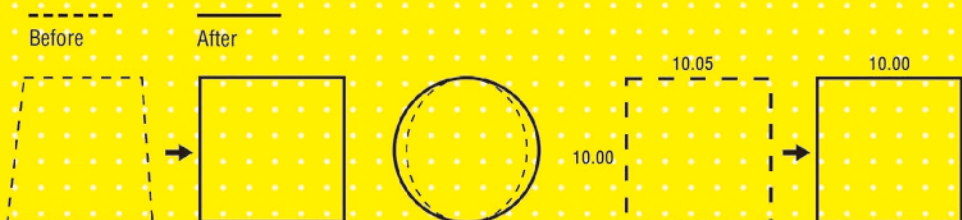
GRAY COMPENSATION ALGORITHM

Gray compensation algorithm enables smoother model surface.



DISTORTION CORRECTION ALGORITHM

Distortion correction algorithm ensures higher dimensional accuracy of the prints.

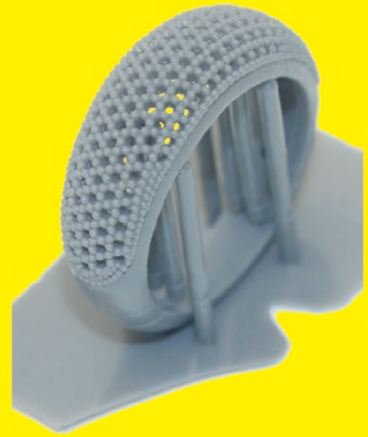


RESIN PARAMETERS



FH1100 STANDARD RESIN

Appearance	Gray
Density (g/cm ³)	1.14
Viscosity (cps)	350 cps (25°C)
Critical Exposure Ec (mJ/cm ²)	12 mJ/cm ²
Penetration Depth (dp)	0.2 mm



FH1200 CASTABLE RESIN

Appearance	Yellow
Density (g/cm ³)	1.12
Viscosity (cps)	350 cps (25°C)
Critical Exposure Ec (mJ/cm ²)	6-13 mJ/cm ²
Penetration Depth (dp)	0.16-0.2 mm



PRINT



FINISHED RING

luxaprint® 3D shell

BIO-COMPATIBLE RESIN

DETAX
Chemistry with passion

Appearance	Skin
Density (g/cm ³)	1.1
Critical Exposure Ec (mJ/cm ²)	6-13 mJ/cm ²

ISO 10993 BIOCOMPATIBILITY CERTIFIED
EN ISO 13485 MEDICAL DEVICES STANDARD COMPLIANT
ISO 13485 : 2003 STANDARD VERIFIED



FH1400

TOUGH RESIN

Appearance	Blue
Density (g/cm ³)	1.1
Viscosity (cps)	359 cps (25°C)
Critical Exposure Ec (mJ/cm ²)	15-18 mJ/cm ²
Penetration Depth (dp)	0.1 mm



COMPATIBLE THIRD PARTY RESIN BRANDS

MadeSolid / Ackuretta Materials / Unishape



HEARING AID



DENTAL



JEWELRY



/ +86 579 82273989

/ www.flashforge.com

/ 2/F, No.518, Xianyuan Road, Jinhua, Zhejiang, China